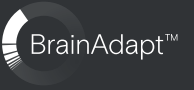


EPOS



IMPACT 1000 Series

When every word counts. Powered by EPOS AI™

Designed for the future of work and featuring EPOS BrainAdapt™ technologies, IMPACT 1000 sets the benchmark for clarity and focus that outperforms its competition. With unmatched AI-powered voice pickup, hybrid adaptive ANC, and native Bluetooth®, it keeps you focused and productive wherever you work.



Key Features

Total environmental control with hybrid adaptive ANC

Not just noise cancellation, but complete mastery over your surroundings. Create your personal zone of focus wherever work takes you.

EPOS BrainAdapt™ Backed by science

Scientifically proven audio technology that reduces listening fatigue, improves concentration and delivers clearer conversations.

The industry's best voice pickup

Sets the industry benchmark with EPOS AI™-driven noise cancellation, delivering your voice clearly and naturally in any working environment.

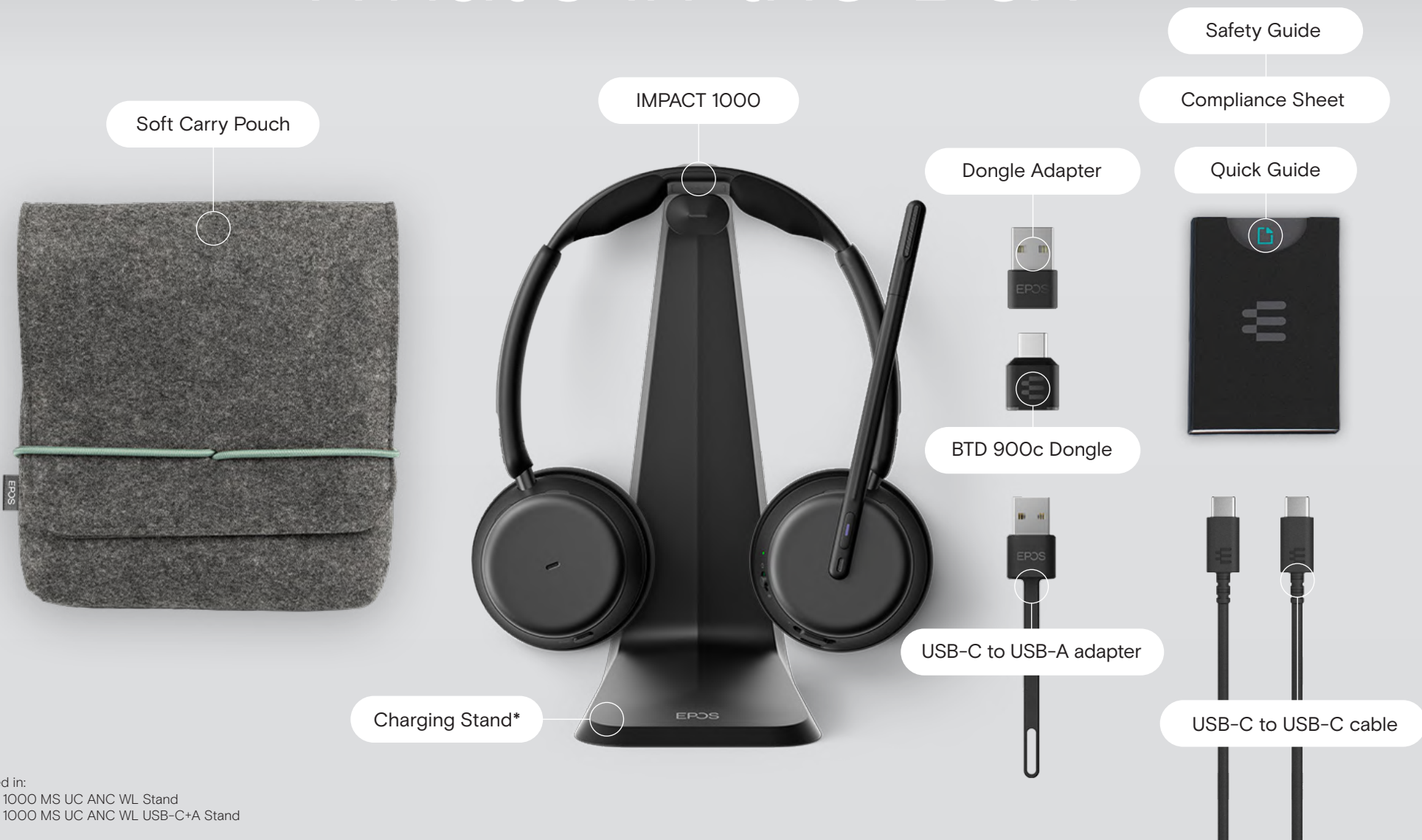
AI precision starts with perfect voice pickup

With a word accuracy higher than 99 out of 100, you can trust that the tasks you give your AI assistant are completed correctly, first time. That's true AI powered productivity.

Smart, effortless, all-day focus.

Instant Bluetooth® connection, intuitive smart features and wireless charging keep you effortlessly in control through every meeting

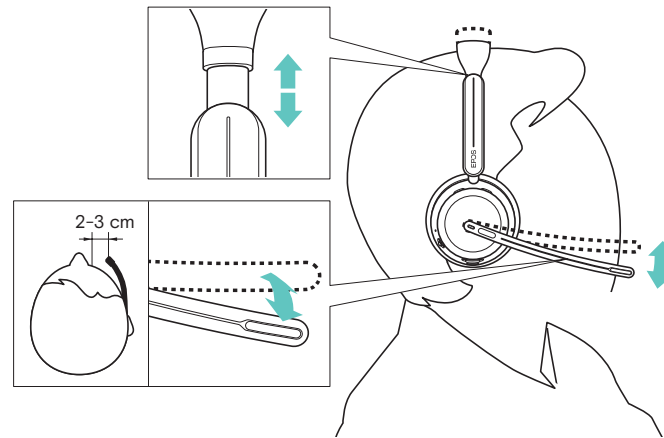
What's in the Box



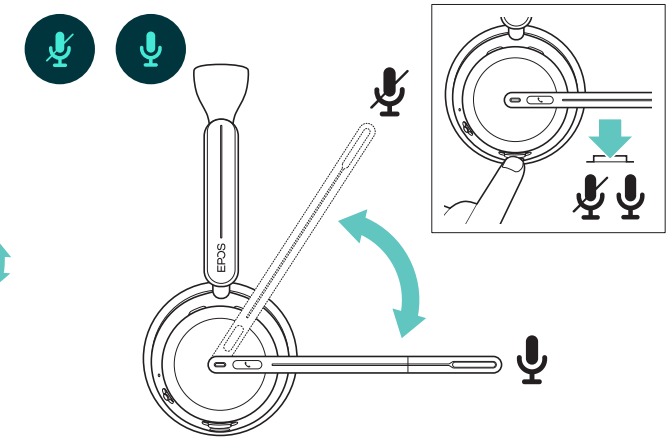
* Included in:
IMPACT 1000 MS UC ANC WL Stand
IMPACT 1000 MS UC ANC WL USB-C+A Stand

How to Use the IMPACT 1000

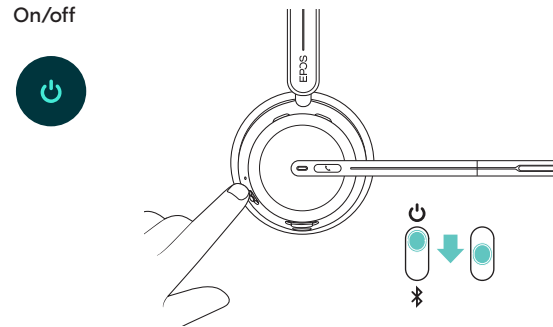
Adjusting and wearing the headset



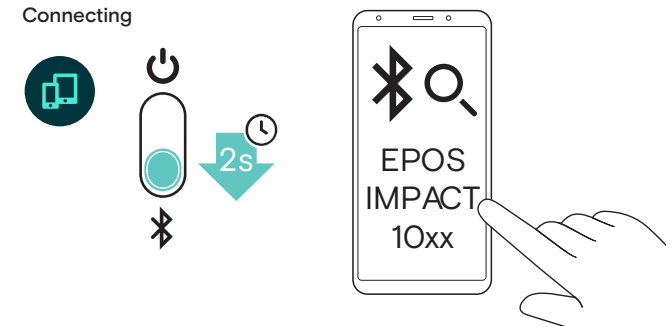
Mute/unmute



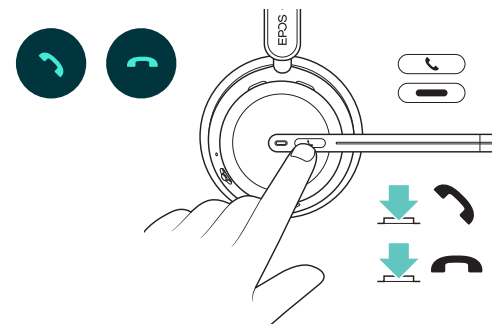
On/off



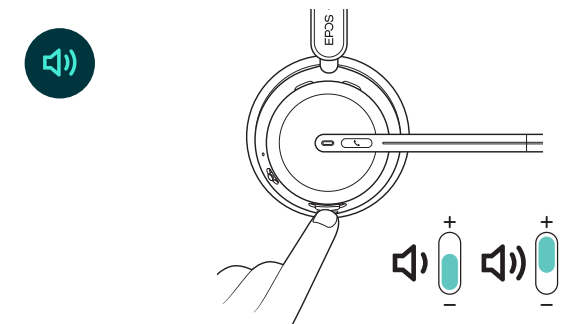
Connecting



Accept/end a call



Adjusting the volume



Additional benefits & features



Triple connectivity

Stay connected wirelessly with up to three devices at the same time.



Native Bluetooth®

The new IMPACT 1000 headsets (Native Bluetooth®) is certified for Microsoft Teams and provides an easy way to connect.



Premium Microphone for the Open Office

The IMPACT 1000 headset series (Premium Microphone for Open Office) is certified for Microsoft Teams.



360-degree busylight

Busylights on both earcups clearly signals when you're on a call and not to be disturbed.



Wireless Charging

Charge your headset wirelessly by simply hanging it on the convenient, sleek charging stand.



TalkThrough mode

Makes quick conversations with colleagues effortless without removing your headset.



Convenient USB-C and USB-A connectivity

Connect easily with any office setup with the included Bluetooth® Dongle USB-C and USB-A adapter.



Sustainable FSC packaging

Plastic free packaging and materials from responsibly managed forests.



IT managers stay in control with EPOS Manager

Free software for asset management, remote updates and adhering to company policy.



Control your settings with EPOS Connect

Easy headset management with EPOS Connect app, available for mobile, desktop or web browser.



Microsoft Swift Pair (When using Native Bluetooth®)

Instantly pair your IMPACT 1000 with Windows devices for a faster, smoother connection.



Sustainable carry pouch

A modern headset pouch crafted in grey RPET felt material, made from recycled PET bottles.

Product features

1/3

Connectivity

Laptop, phone, tablet

Up to 30m/98 ft wireless range to a computer using the included BTD 900c dongle.

Native Bluetooth®

Connect to a computer without the use of a dongle, reducing port consumption.

Dongle

Comes with pre-paired BTD 900c dongle including BTD USB-C to USB-A adapter.
A future software release will add support for Microsoft Teams over native Bluetooth®.

Multi-point

Connect to three Bluetooth devices at the same time, including a mobile device and computer.

Multiple device pairing

Pair with up to 8 devices.

Audio

Active noise cancellation (ANC)

Hybrid Adaptive ANC tuned to suppress surrounding noise to support focus in open offices and working environments with distractions.

Talk Through mode

Makes brief conversations with people next to the user possible without needing to remove the headset.

EPOS ActiveGard™

Protects users against acoustic injury caused by sudden bursts on the line.

EPOS EU Noise at Work Limiter®

Enhanced audio protection that reduces the risk and severity of acoustic shock, average 85 dB over a work day.

Australia G616 Acoustic Safety

Enhanced audio protection that reduces the risk and severity of acoustic shock, not exceeding 102 dB SPL.

EPOS BrainAdapt™

Proven to reduce users listening effort, improve speech recognition and improve memory recall by reducing the cognitive load on the brain caused by noise or poor audio.*

Product features

2/3

Ease of use

Mute LED on boom arm

If the user speaks while muted, the LED on the boom arm will flash to indicate that the microphone is muted.

Call control

Call control on the headset lets users manage calls directly, improving efficiency and reducing interruptions.

Busy light

360-degree busylight indicates to colleagues when you're on a call and not to be disturbed.

Boom arm features

Flexible boom arm allows for precise placement and 270 degrees rotation enables left or right wearing. Easily answer and mute calls by moving the boom arm to the down or upright position.

Microsoft Swift Pair

Enables faster, seamless Bluetooth pairing, reducing setup time and improving user productivity with professional headsets.

Certifications

Microsoft Teams (Native Bluetooth* + Premium Microphone for Open Office)
Zoom Workplace, Google Meet, Cisco Webex.

Ensure optimal audio quality and seamless integration with your preferred unified communications platform.

*A future software release via EPOS Connect will add support for Microsoft Teams over native Bluetooth.

Durability

Warranty

2 years

Software

EPOS Connect desktop app

EPOS Connect freeware for Windows and Mac. Conduct firmware updates and configure headsets for personal audio preferences: eposaudio.com/software-epos-connect

EPOS Connect mobile app

Compatible with most iOS and Android systems and available in 7 languages including English, French, German, Spanish, Japanese, Korean and Simplified Chinese.

EPOS Connect for thin clients

Conduct firmware updates, supported by DellWyse, Linux, IGEL, eLux

EPOS Connect for web

A web-based solution to conduct firmware updates and configure headsets for personal audio preferences.

EPOS Manager

Manage, update and configure EPOS audio devices from any location. For both cloud and on-premises solutions: eposaudio.com/software-epos-manager

Product features

3/3

Product variants

IMPACT 1000 MS UC ANC WL Stand
Art. no. 1001593

IMPACT 1000 MS UC ANC WL
Art. no. 1001591

IMPACT 1000 MS UC Mono WL
Art. no. 1001592

IMPACT 1000 MS UC ANC WL USB-C+A Stand
Art. no. 1001551

IMPACT 1000 MS UC ANC WL USB-C+A
Art. no. 1001548

What's in the box

IMPACT 1000 on-ear, dongle-free Bluetooth® headset. Wireless charging stand (CH 40), Headset Pouch, USB-C to USB-A Adapter, USB-C Cable (1.2m), Safety & Compliance sheet, Quick guide

IMPACT 1000 on-ear, dongle-free Bluetooth® headset. Headset Pouch, USB-C to USB-A Adapter, USB-C Cable (1.2m), Safety & Compliance sheet, Quick guide

IMPACT 1000 mono on-ear, dongle-free Bluetooth® headset. Headset Pouch, USB-C to USB-A Adapter, USB-C Cable (1.2m), Safety & Compliance sheet, Quick guide

IMPACT 1000 on-ear Bluetooth® headset. Wireless charging stand (CH 40), Headset Pouch, Bluetooth® USB dongle BTD 900c, BTD USB-C to USB-A adapter, USB-C cable (1.2m), Safety & Compliance sheet, Quick guide

IMPACT 1000 on-ear Bluetooth® headset. Headset Pouch, Bluetooth® USB dongle BTD 900c, BTD USB-C to USB-A adapter, USB-C cable (1.2m), Safety & Compliance sheet, Quick guide

EAN code

57 14708 01420 1

57 14708 01418 8

57 14708 01419 5

57 14708 01378 5

57 14708 01375 4

UPC code

8 40064 41394 7

8 40064 41392 3

8 40064 41393 0

8 40064 41352 7

8 40064 41349 7

Spare parts

Product	Description	EAN code	UPC code
CH 40 Art. no. 1001139	Wireless Charging stand. USB-C	57 14708 00941 2	8 40064 40941 4
BTD 900c Art. no. 1001149	The BTD 900c dongle provides connection to compatible Bluetooth® devices in the ADAPT and IMPACT Series.	57 14708 00951 1	8 40064 40951 3
Replacement cable USB-C to USB-C 1.2m Art. no. 1001489	Replacement cable USB-C to USB-C 1.2m	57 14708 01310 5	8 40064 41289 6
Replacement IMPACT 800/1000 ANC ear pads Art. no. 1001290	Leatherette ANC ear pads - 2 pcs.	57 14708 01120 0	8 40064 41100 4
Replacement IMPACT 800/1000 ear pads Art. no. 1001289	Leatherette non-ANC ear pads - 2 pcs.	57 14708 01119 4	8 40064 41099 1
Headset Pouch O1 Art. no. 1001239	Sustainable Headset Pouch Grey RPET Felt Material.	57 14708 01046 3	8 40064 41046 5
Replacement BTD USB-C to USB-A Adapter Art. no. 1001589	Converts USB-C dongles to USB-A ports. Variant dependent.	57 14708 01416 4	8 40064 41390 9
Replacement USB-C to USB-A Adapter Art. no. 1001474	Converts USB-C cables to connect to USB-A ports. Variant dependent.	57 14708 01295 5	8 40064 41274 2
Spare battery O6 Art. no. 1001546	Spare battery for IMPACT 1000 Series headsets.	57 14708 01371 6	8 40064 41347 3