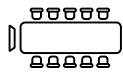
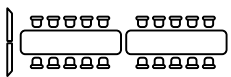




MAXHUB XT20-PS Kit for Microsoft Teams Rooms



The MAXHUB XT20-PS Kit is tailored for medium to large meeting rooms, delivering seamless integration of advanced video, audio, and control technologies. It includes a 4K dual-eye PTZ camera UC P30 with AI-powered tracking, AI-enhanced speakerphones UC BM45, a touchscreen control panel, and a mini-PC, providing a comprehensive collaboration solution. With features such as 4K content sharing and dual-screen display, it ensures an intuitive and efficient conferencing experience. The kit's plug-and-play setup, three-year hot-swap warranty, local support, and remote device management via MAXHUB's Pivot tool guarantee reliability and adaptability for modern meeting environments.



4K Content Sharing



Wireless Content Sharing



AI Powered Video



AI Noise Reduction



Multiple Console



Cloud Device Management



*4K Content Sharing will be enabled in Early Q1 2025 upon firmware update.



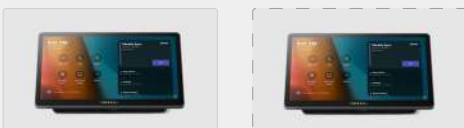
Effortless Video Conferencing with Dual Display & Wireless Sharing

The new bundle facilitates a seamless dual-screen display for meeting spaces. Easily initiate wireless content sharing with a single click using the MAXHUB Wireless Dongle, or enjoy exclusive 4K sharing via wired connections.



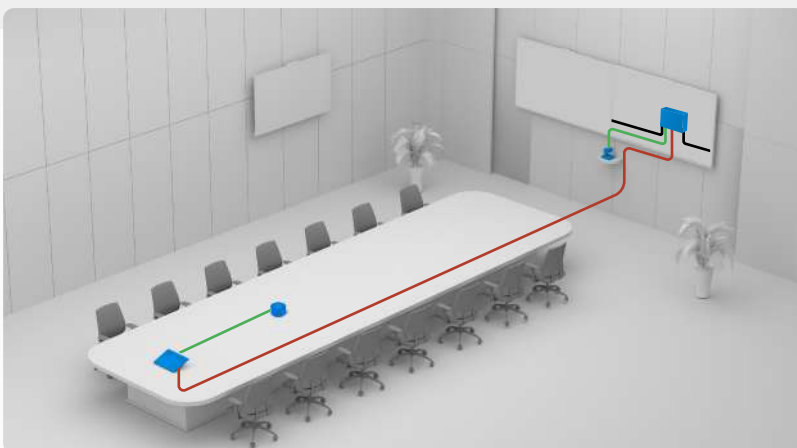
One-click wireless sharing using the MAXHUB Dongle

*WT13M & WT13S availability may vary by region. Please consult your authorized reseller for details.



Additional Console for Extra Flexibility

In addition to the default console included in the bundle kit, you can extend the setup by adding another console. This is ideal for larger meeting rooms and ensures easier access to meeting controls for all participants.



A Single Cable Deployment Fits Rooms of All Sizes

Just one Cat5e/Cat6a cable connects the touch console to the Microsoft Teams Rooms mini PC, enabling flexible placement on the table without distance limits.

- Cat5e/Cat6a
- USB
- HDMI

Capture Every Detail

With a dual-eye 4K camera design, the panoramic camera detects every movement in the meeting room, while the PTZ camera ensures accurate capture of attendees at all times.



Plug-and-Play Simplicity

Featuring POE+ technology, this device can be powered using a Cat5e cable. Additionally, it includes an integrated mounting kit for effortless installation. Thanks to its USB plug-and-play setup, it is instantly ready for your meetings.



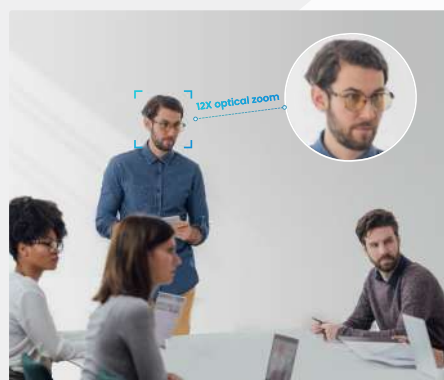
Installation Option A



Installation Option B

Enhance Zoom Clarity

The UC P30, equipped with a 12x optical zoom and a 90° Field of View (FOV), guarantees clear and high-definition image quality for every participant, even when zoomed in.



AI-Powered Tracking Features

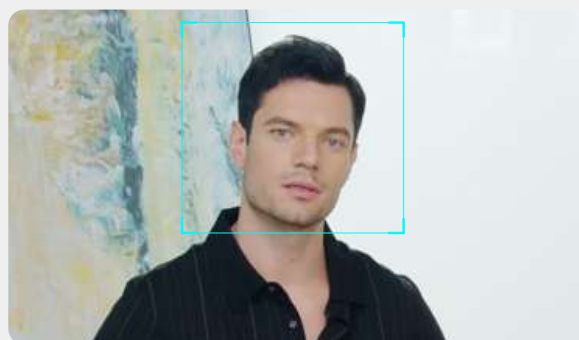


> Speaker Tracking

Speaker Tracking dynamically follows the active speaker in real-time, elevating engagement with a lifelike meeting experience.

> Auto Framing

Automatically adjusts the camera view to center all participants in a room. This is achieved via real-time detection and tracking of the number and positions of participants.



> Presenter Tracking

Presenter Tracking ensures the presenter remains centered by dynamically following them during a presentation, providing remote participants with an immersive experience.

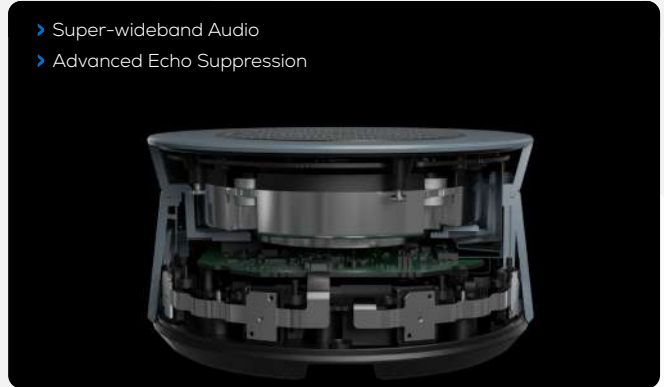
360° Voice Pick-Up and Natural Sound

The UC BM45 features an 8-beam microphone array and advanced speakers for 360-degree voice pick-up and natural sound. With super-wideband audio and advanced echo suppression, it ensures clear communication.

- ▶ 8-beam Microphone Array
- ▶ 360-degree Voice Pick-Up



- ▶ Super-wideband Audio
- ▶ Advanced Echo Suppression



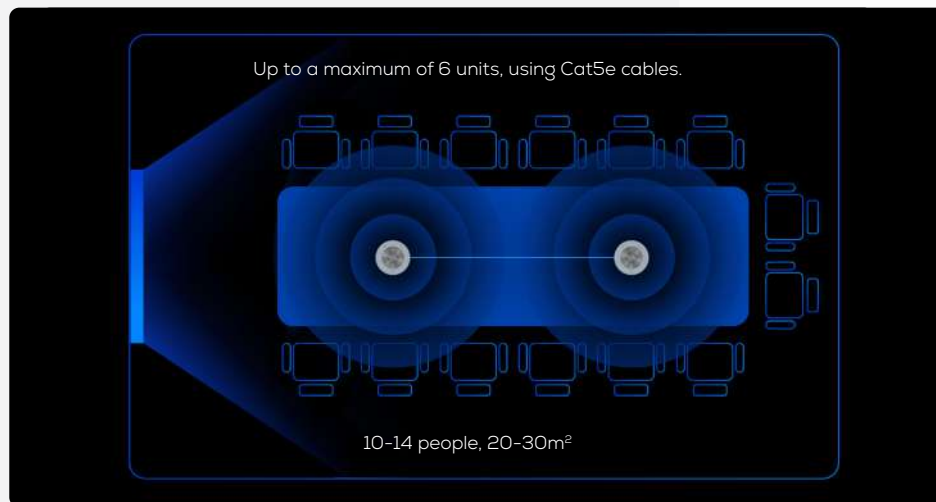
AI Noise Suppression

AI algorithms remove background noises like keyboard clicks and air conditioning, focusing solely on human voices. Combined with AI noise cancellation and AEC, it enhances focus and collaboration.



Flexible Coverage

Cover large meeting spaces effortlessly by connecting multiple UC BM45 units in a daisy chain via a Cat5e cable. This flexible deployment option accommodates various room sizes, ensuring comprehensive audio coverage.



*Note: Please refer to Quick Start Guide for detailed room cabling.

Full-Duplex Audio

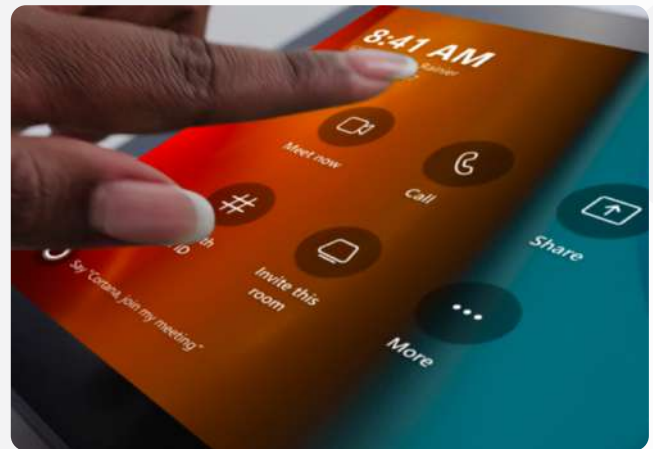
Say goodbye to interruptions during discussions. Full-duplex audio allows for simultaneous conversations, making collaboration seamless and efficient.



▶ Everyone on the call can speak and be heard clearly, even when speaking simultaneously.

Instant Access with One Click

Just one click on the touch screen to join the meeting and directly control Teams meetings, making it simple and efficient, allowing participants to focus more on the meeting content.



Remote Management

With MAXHUB Pivot, IT managers can easily monitor, control, and update all your room devices remotely.

[Learn more about MAXHUB Pivot](#)



XT20-PS Kit

XT20-PS Kit Package Includes:

XC25T Mini-PC	x1
TCP30T Touch Console	x1
UC P30 Camera	x1
UC BM45 Speakerphone	x1

Package Physical Specification

Package Dimension (W*H*D)	660 × 360 × 325 mm / 26 × 14.2 × 12.8 inch
Gross Weight	10.8 kg / 23.8 lbs

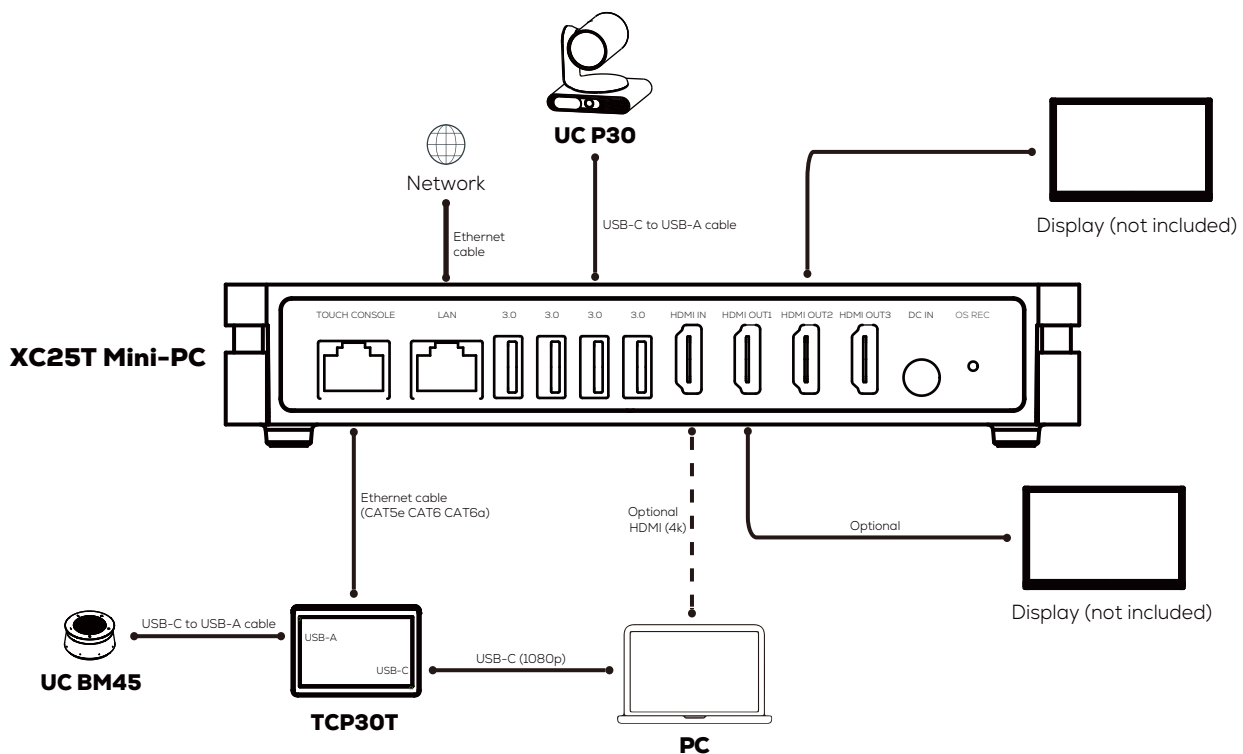
Optional Accessory

Wireless Dongle (Content Share)	WT13M or WT13S
Wall Mount Bracket	TCP30WM
Speakerphone (Daisy Chain)	UC BM45

Environmental Conditions

Operation Temperature	0°-40°C / 0°F-104°F
Operation Humidity	10%-90%RH
Storage Temperature	-20°C-60°C / -4°F-140°F
Storage Humidity	10%-90%RH
Altitude	Below 5000 m/ 3.1 miles

Connection



Statement

Size and weight vary by configuration and manufacturing process, please refer to the actual product. The product images are for illustrative purposes only and may slightly differ in appearance, colour, size, etc. from the actual product. The description, illustrations, etc. in this document may subject to change in accordance with the latest product specification and performance. Should the above-mentioned change in the document become necessary, the document may be updated without written notice.



XT20-PS Kit

Mini-PC XC25T

General Information		I/O Port	
Device Type	Mini-PC	USB-A 3.0	4
CPU	Intel® Core™ i5-1240P Processor	RJ45 (LAN)	1
Memory	16GB DDR4	RJ45 (Touch Console)	1
Storage	256 GB	HDMI Out	3
Graphic	Intel® UHD Graphics for 12 th Gen Intel® Processors;	HDMI In (Content Share)	1
Network	1000Mbps RJ45	AC Power	1
Wi-Fi	Wi-Fi 6	Kensington slot	1
Support Bluetooth	5.1		
Operating system	Windows 11 IoT Enterprise SAC		
Application	Microsoft Teams Room		

Accessories (included in the package)	
Wall Mount Kits	x1
HDMI Cable (3m / 9.8ft)	x2
Power Adapter	x1
Power Cable	x1

Power	
Power Supply Mode	DC Power In
Power Requirements	19.5V 6.15A
Max Power Consumption	120W

Physical Specification	
Product Demension	196 × 196 × 40 mm / 7.7 × 7.7 × 1.57 inch
Product Weight	1.12 kg / 2.47 lbs

Touch Console TCP30T

Display	
Size	11.6 inch
Resolution	1920 × 1080
Frequency Refresh Rate	60Hz
Back Light Unit	ELED
Brightness with glass	Min.250cd/m ² , Typ.300cd/m ²
Life Time	≥ 20000 Hours

Touch System	
Type	Capacitive touch
Surface Treatment	Anti-fingerprint, Anti-glare

I/O Port	
USB-C (Content Sharing)	1
USB-A 2.0 (Table Audio Devices)	1
RJ45 (to connect XC25T mini-PC)	1
RJ45 (for optional 2nd touch console)	1
Audio Out (headphone , without mic)	1
USB-A 2.0 (for wireless dongle pairing)	1

Accessories (included in the package)	
USB-C Cable (1.8m / 5.9 feet)	x1
Ethernet Cable (7.5m / 24.6 ft)	x1

Physical Specification	
Product Demension	278 × 164 × 82 mm / 11 × 6.4 × 3.2 inch
Product Weight	1.16 kg / 2.56 lbs

Sensor	
Motion Sensor	PIR sensor for auto wake-up

XT20-PS Kit

UC P30

Dual Camera

PTZ Camera

Image sensor	Sony 4K , 8.42M pixel
Video outputs (USB 3.0)	H.264/MJPEG up to 2160p@30fps, YUV up to 1080p@30fps
Video outputs (USB 2.0)	H.264/MJPEG up to 1080p@30fps
Optical zoom	12 x
Digital zoom	16 x
FOV	DFOV 90° / HFOV 80° / VFOV 49.2°
Motorized Pan & tilt	Pan: ±170°, Tilt: ±90°

Power

Power supply	DC in 12V, 2A / POE+ in (Max 25W)
Power consumption	≤ 22W

Accessories (included in the package)

USB Cable C-A (5m)	× 1
Power Adapter	× 1
Remote Control	× 1
Mounting kits	× 1
Quick Start guide	× 1

Panoramic Camera

Image sensor	8MP, Sony Sensor
FOV	120° DFOV
Manual tilt	±10°
Privacy Cover	Electric Privacy Cover
Camera LED Indicator	Yes

IO Ports

USB 3.0 Type-C (Device)	1
USB 2.0 Type-A (host)	1
Mic in (3.5mm)	1
HDMI 1.4 out	1
RJ45 (IP Steam, POE+)	1
RS232 (VISCA/Pelco-D/ Pelco-P protocol)	1
Security Lock Slot	1

AI Feature

Auto Framing
Speaker Tracking
Presenter Tracking
Intelligent Focus

UC BM45

Audio

Microphone Quantity	8
Voice Pick-up Range	Best 4 m (13.1 ft) ,maxium 8 m (26.2 ft)
Microphone Frequency Range	100-10 kHz
Speaker Output Power (Maxium)	5W
Sound Pressure Level	82db@1m
Speaker Bandwidth	100Hz~20kHz
AI Noise Reduction	Yes
Full Duplex Communication	Yes
Auto Gain Control (AGC)	Yes
Auto Echo Cancellation (AEC)	Yes

Physical Specification

Product Dimension	122 mm (Diameter) x 65 mm/ 4.8 inch (Diameter) x 2.6 inch
Product Weight	472 g / 1 lbs
Package Dimension	TBD
Package Weight	1.2 Kg

Connectivity

USB-C	× 1
RJ45 (POE in)	× 1 To connec to a POE switch To connect the previous UC BM45 in a cascading mode To connect MAXHUB V7 XBoard (Mic in)
RJ45 (POE out)	× 1 To connect the next UC BM45 in a cascading mode
DC In	54V / 0.925A

Easy of Use

Hot Key	Mute / Unmute, Volume +, Volume -, Answer, Hand up
LED Indicator	Yes
Compatible Software	MAXHUB Aglin MAXHUB Pivot
Room Certification	Microsoft Teams Rooms Certified

Accessories (included in the package)

Table Bracket	× 1
Power Adapter	× 1
USB-C to USB-A Cable	× 1
Ethernet Cable	× 1