

MAXHUB



# MAXHUB Touch Console TCP30M

The Ideal Companion for  
Seamless Collaboration

# Advanced Meeting And Device Control

Initiate productive, collaborative video conferences with ease and simplicity



## Solution

- Compatible with the XBoard V6/V7 Series (MAXHUB OS Version)
- Pairs with XBoard wirelessly or via LAN
- One-touch meeting initiation with full device control
- USB-C port with 65W PD to charge your laptop

## One-Touch to Start

Synchronize meeting schedules and join Microsoft Teams, Zoom, Google Meet, and Webex meetings with a single tap

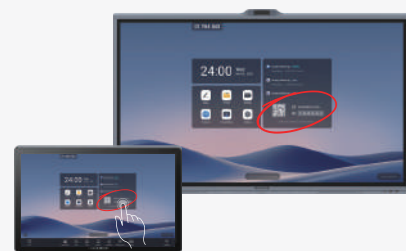


## Total Device Management

Turn on the camera, mute microphones, change volume levels, and modify screen brightness directly from the console.

## Real-Time Preview & Annotation

View the screen in real-time on the console and perform precise operations like whiteboard writing and annotation directly on the tabletop device.

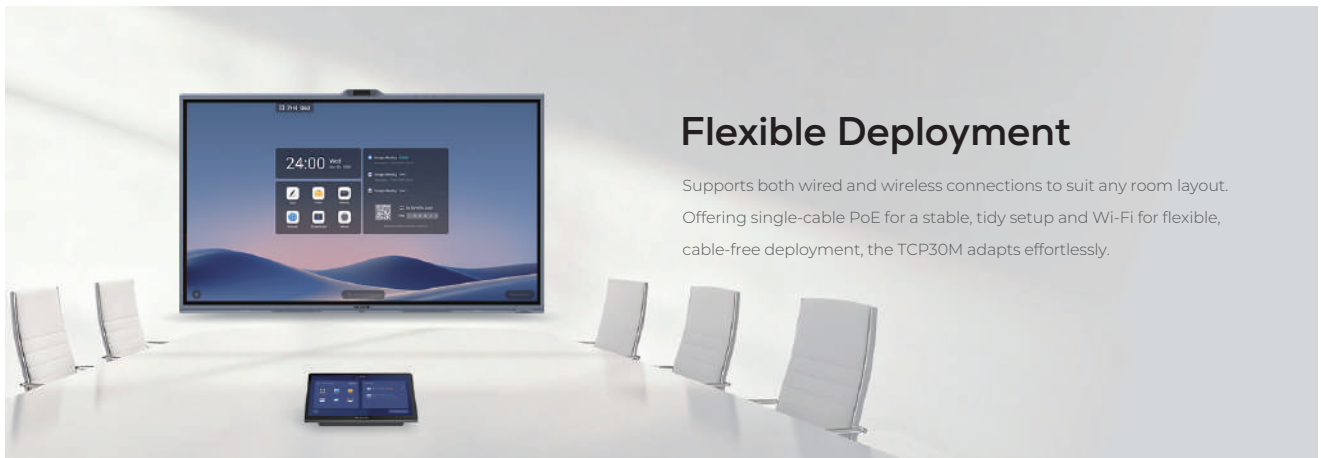


# Built for Versatility, Powered for Collaboration

Adaptable to any meeting space, the TCP30M combines flexible deployment options with integrated 65W charging to ensure seamless and efficient meetings.

## Flexible Installation

Whether placed on the desk or wall-mounted for specialized setups, the TCP30M adapts to your room's layout.



## 65W PD Charging

Stay powered throughout your meetings. The integrated USB-C port delivers up to 65W Power Delivery, providing a fast charge for your laptop to keep your laptop powered through every session.



## Product Parameters

### Display

Size	11.6 inch
Resolution	1920x1080
Frequency Refresh Rate	60Hz
Backlight Unit	ELED
Brightness With Glass	250 nits(Min.) 300 nits(Max.)
Life Time	≥20000hours

### Input/Output Port

RJ45(INTERNET)	× 1
RJ45(EXT)	× 1
DC In	× 1
Type-C	× 1
USB 2.0	× 1

### Power

Power Input	19V DC 4.5A
Power Output	Type-C PD 65W(Max.)

### Operating System

OS	Android 13
----	------------

### Touch System

Type	Capacitive touch
Surface Treatment	Anti-fingerprint, Anti-glare

### Accessories

Type-C Cable (1.5m/4.92ft)	× 1
Ethernet Cable (7.5m/24.61ft)	× 1
Screwdriver	× 1
Power Adapter	× 1
AC Cable(1.5m/4.9ft)	× 1

### Sensor

Motion Sensor	PIR sensor for automatic wake-up
---------------	----------------------------------

### Physical Specification

Product Dimension(L×W×H)	278×164×82mm/11×64×3.2 inch
Product Weight	1.16kg/2.56 lb
Package Dimension(L×W×H)	1 pcs:570 ×246×101mm 4 pcs:590 ×440×280mm
Package Weight	1 pcs:3.12kg

### Statement

Size and weight may vary depending on configuration and manufacturing processes. Please refer to the actual product for exact specifications. Product images are for illustrative purposes only and may differ slightly from the actual product in appearance, color, size, etc. Descriptions and illustrations in this document are subject to change in accordance with the latest product specifications and performance. Any necessary updates to this document may be implemented without prior written notification.